

WPQHA Pat Fuchs Memorial Show

Oct 2 Level 1/Rookie Show

Judge: Amy Watkins

PATTERN BOOK

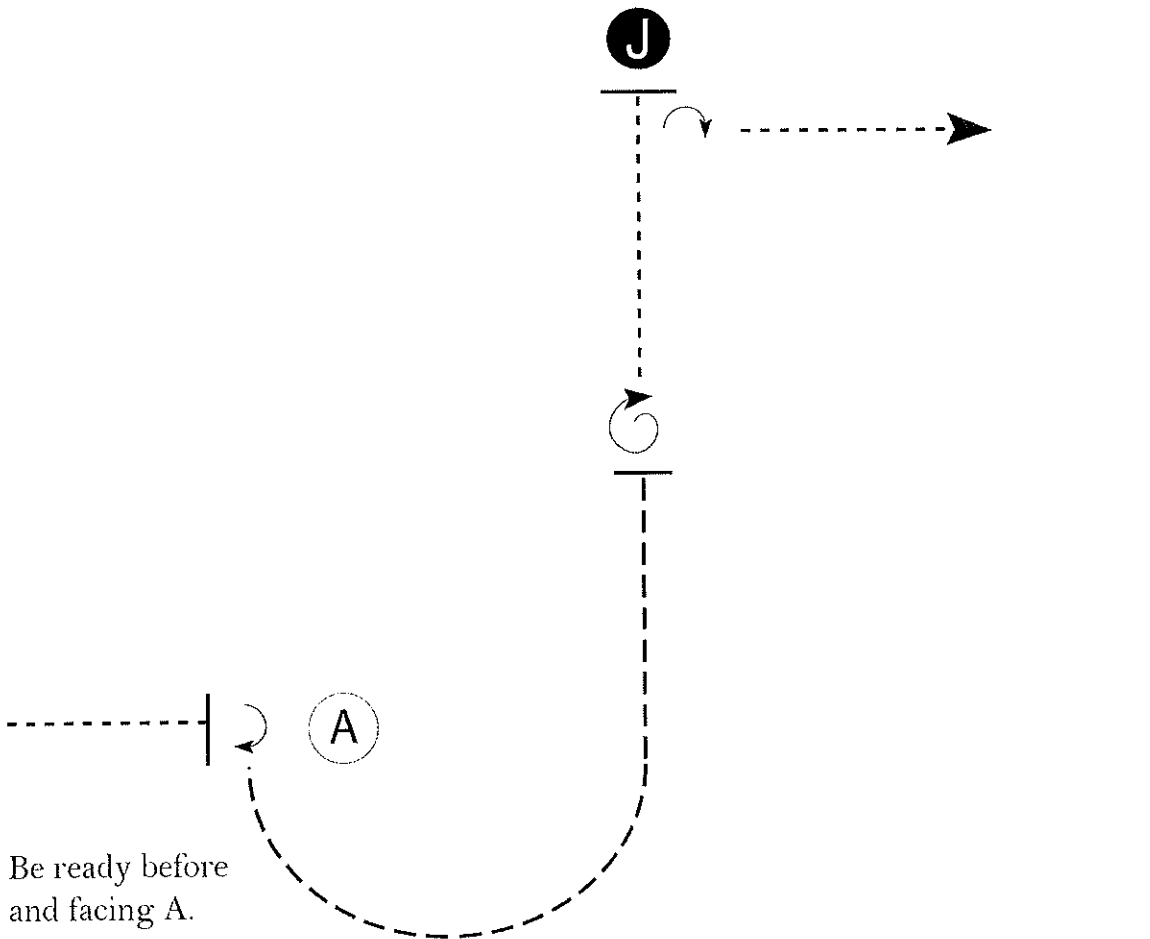
OCTOBER 2, 2020

October Novice/ Rookie Show

Rookie and Level One Showmanship

- 10/2/2020

w w w . h o r s e s h o w p a t t e r n s . c o m



Be ready before
and facing A.

1. Walk to A.
2. Stop and perform a 1/4 turn.
3. Trot in a half circle and halfway to Judge.
4. Stop and perform a full (360 degree) turn.
5. Walk to judge and set up for inspection.
6. When dismissed, perform a 1/4 turn and walk straight away from Judge.

Walk	-----
Trot	- - - - -
Back	← ⊃ ⊃ ⊃ ⊃ ⊃ ⊃
Marker	⊙ B
Judge	● J

Follow the instructions of your ring steward.

[S/1-82]

Pattern Provided by:

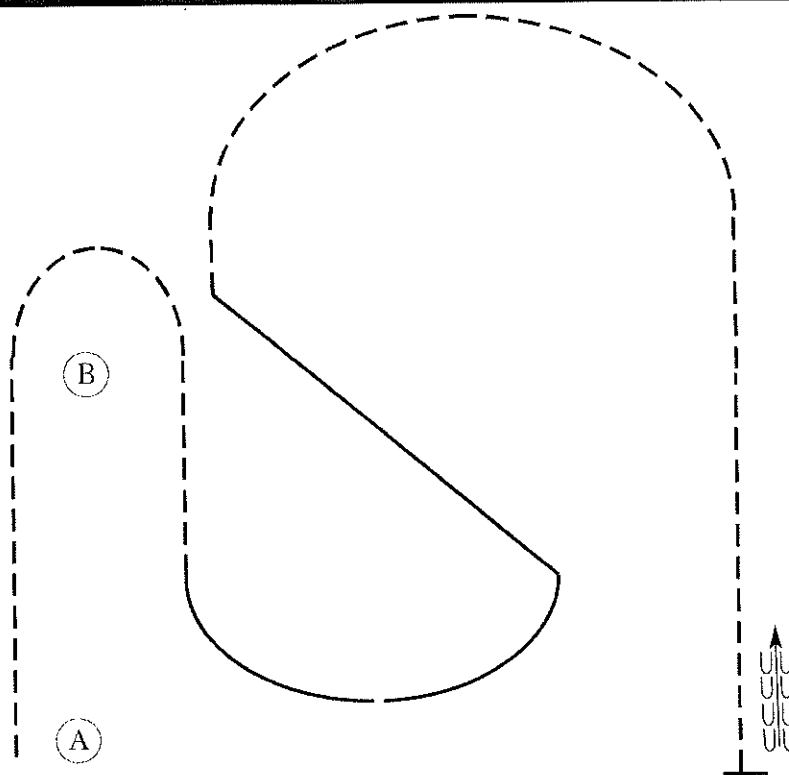
Amy Watkins

October Novice/ Rookie Show

Rookie and Level One Equitation

10/2/2020

www.HorseShowPatterns.com



Be ready at A.

1. Begin at the trot on the right diagonal, change diagonals 1/2 way between A and B and continue around B.
2. Sitting trot from B to 1/2 way to A.
3. Canter on the left lead in a half circle and on the diagonal.
4. Break to trot on the left diagonal in a half circle.
5. Sitting trot until even with A.
6. Stop and back one horse length.
7. Pattern is complete. Exit at a sitting trot.

Walk	-----
Trot	- - - - -
Extended Trot	— — — — —
Canter	—————
Leg Yield	
Lead Change	↗ ↘
Back	← 2222 5555
Marker	(B)
Sidepass	← ··· ···
Hand Gallop	—————

[HSE/1-81]

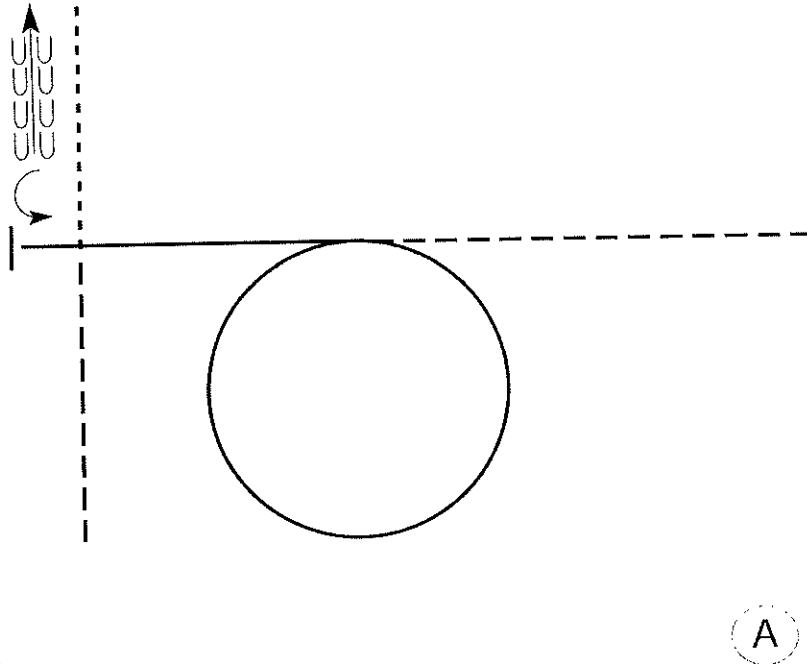
Pattern Provided by:

Amy Watkins

October Novice/ Rookie Show

All Rookie and Level One Horsemanship

10/2/2020



Be ready at A.

1. Perform a jog from A and a square corner toward center of pattern.
2. Lope a left lead circle.
3. Close the circle and continue loping on the left lead in a straight line.
4. Stop and perform a 1/4 turn to the left.
5. Back approximately one horse length.
6. Walk until you cross your line.
7. Exit arena at a jog.

Walk	-----
Jog	-----
Extended Jog	-----
Lope	-----
Lead Change	
Back	
Marker	(B)

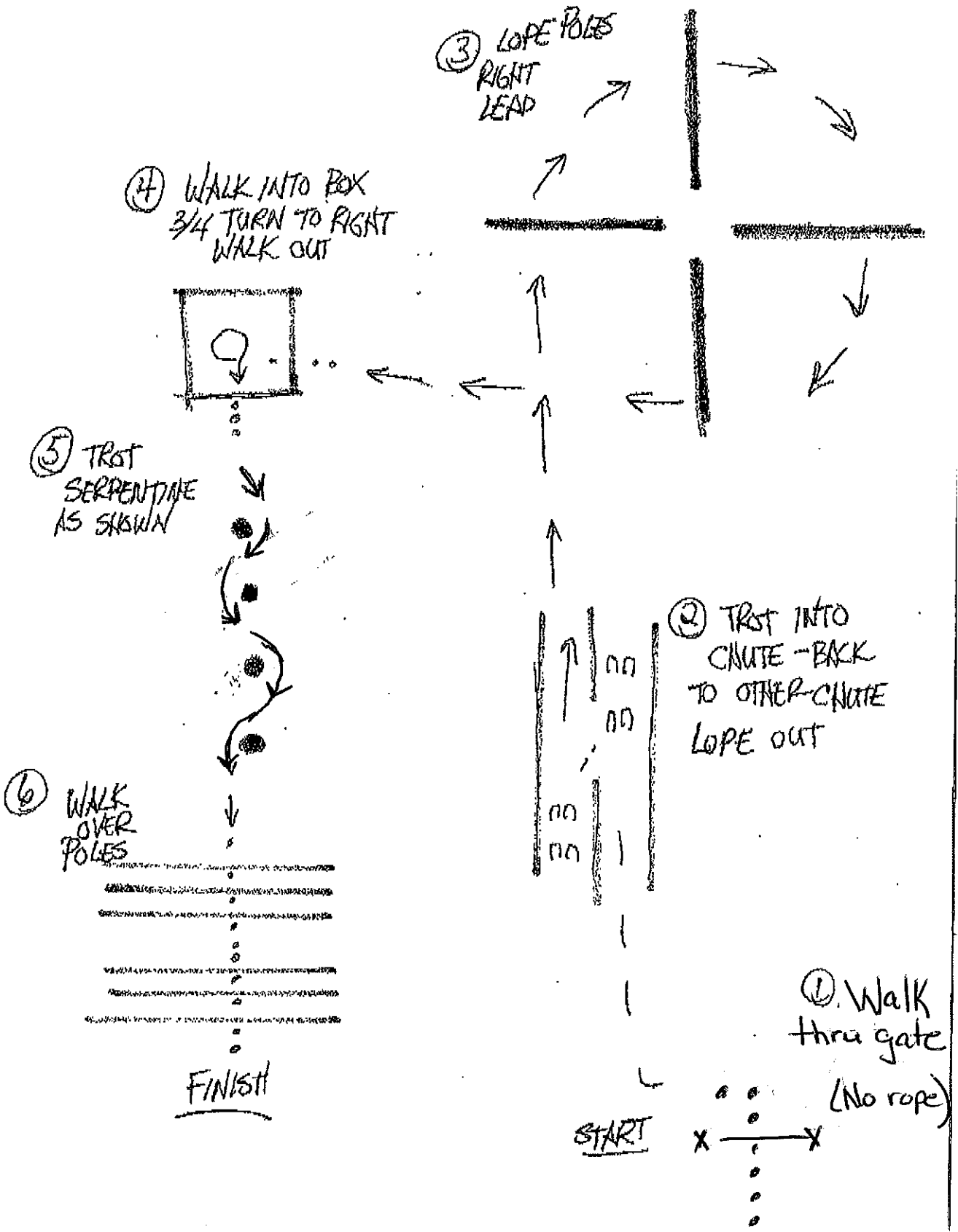
[WH/1-104]

Pattern Provided by:

Amy Watkins

WPQHA TRAIL

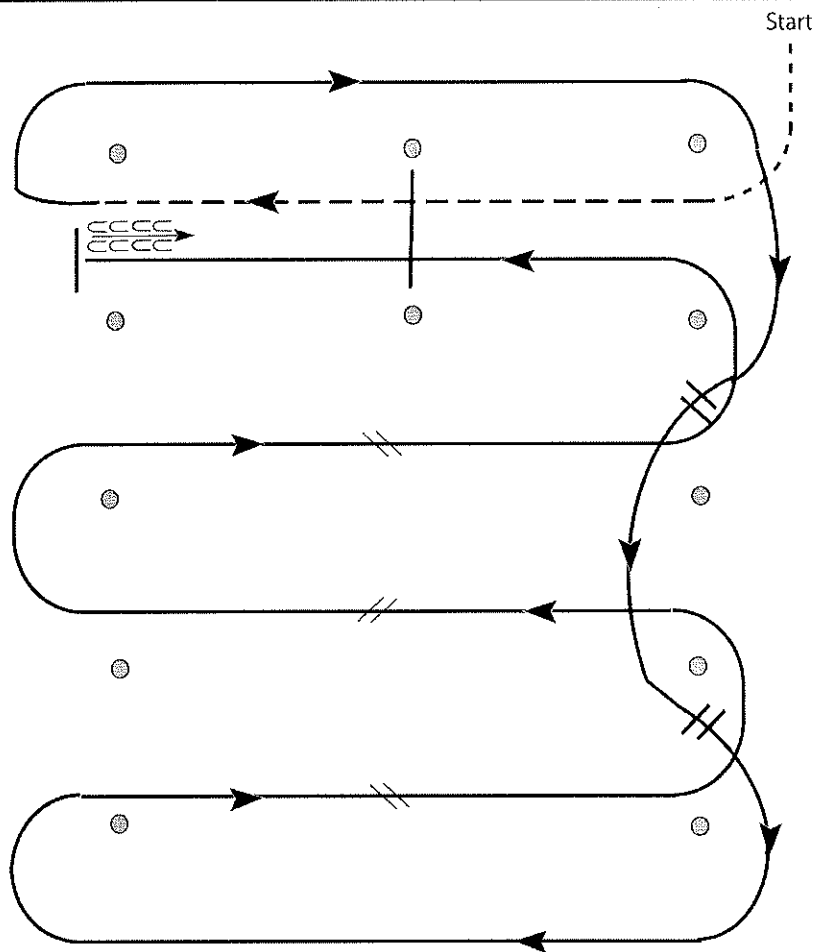
ALL TRAIL - EXCEPT
SMALL FRY +
WALK - TROT



October Novice/ Rookie Show

All Western Riding

10/2/2020



1. Walk, transition to jog, jog over log.
2. Transition to right lead and lope around end.
3. First line change.
4. Second line change. Lope around end of arena.
5. First crossing change.
6. Second crossing change.
7. Third crossing change.
8. Lope over log.
9. Lope, stop and back.

[WR/GP-4]

Pattern Provided by:

Amy Watkins

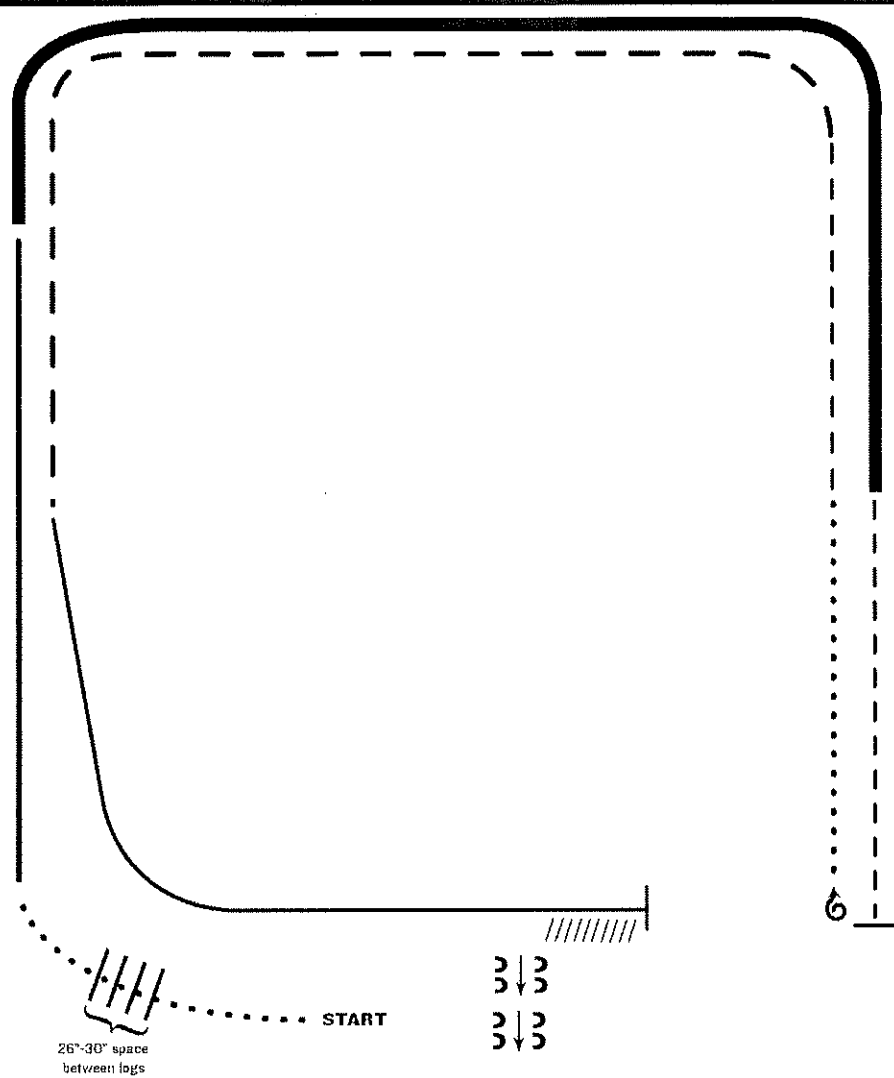
October Novice/ Rookie Show

All Ranch Riding

10/2/2020

W W W . H O R S E S H O W P A T T E R N S . C O M

W W W . H O R S E S H O W P A T T E R N S . C O M



1. Walk
2. Walk over logs
3. Lope right lead
4. Extended lope (right lead)
5. Trot
6. Stop, 1 1/2 turns right
7. Walk
8. Trot
9. Extended trot
10. Lope left lead
11. Stop and Back
12. Side pass right

Note: The drawn description of this pattern is only intended for the general depiction of the pattern. Existing standards and/or the arena surface may be used to best advantage.

[RR/AQHA-6]

Pattern Provided by:
Amy Watkins